

24 Worthing Road, Horsham, West Sussex, RH12 1SL

Tel: 01403 210088

lettings@linesandjames.com

www.linesandjames.com

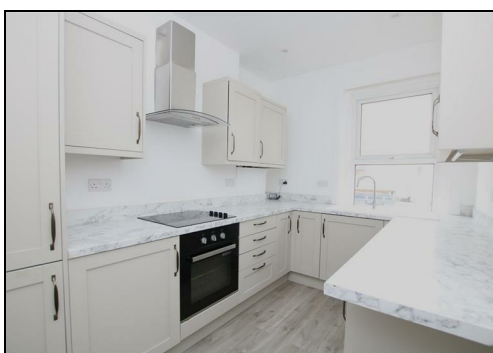
**& LINES**  
*James*



## **68A Park Street, Horsham, RH12 1BX**

### **£1,450 Per month**

A delightful two bedroom split level period maisonette conveniently situated in the town centre and only a short walk from the station.



Lines and James are pleased to bring this maisonette to the market offering well presented accommodation arranged over two floors. To the first floor the property features a spacious sitting room with focal decorative fireplace, modern kitchen, bathroom with shower over bath. The bedrooms are situated on the second floor one with dormer window and one with Velux windows and storage to the eaves. The property also benefits from gas central heating and double glazing.

Energy Efficiency Rating		
	Current	Potential
Very energy efficient - lower running costs		
(92 plus) A		
(81-91) B		
(69-80) C		
(55-68) D		
(39-54) E		
(21-38) F		
(1-20) G		
Not energy efficient - higher running costs		
England & Wales		
EU Directive 2002/91/EC		

Environmental Impact (CO <sub>2</sub> ) Rating		
	Current	Potential
Very environmentally friendly - lower CO2 emissions		
(92 plus) A		
(81-91) B		
(69-80) C		
(55-68) D		
(39-54) E		
(21-38) F		
(1-20) G		
Not environmentally friendly - higher CO2 emissions		
England & Wales		
EU Directive 2002/91/EC		

